



Portico Poppets news letter June 2010

Parents and careers

New for the setting



ECAT

Charlotte is currently attending a vast amount of training relating to the ECAT (Every Child A Talker) programme, she will be auditing the setting and included in this will be observing the children and staff to assist with developing the practice of the setting in providing a language rich positive environment.

Only 20 settings from St.Helens have been selected to be part of this training and Charlotte has the support of me in carrying out her role as an ELLP (Early Language Lead Practitioner)

The nursery will receive visits from advisors who work for the local authority in supporting them us to roll out this programme within the setting. Early language consultants in ECaT LAs are working closely with lead practitioners in targeted settings to:

- share understanding about how language develops from 0-5
- interact with and talk to children effectively
- regularly monitor how children's language is developing
- support identification of children who might be falling behind
- consider how to get parents more involved
- design, plan and lead on language activities.



The stepped approach to quality outdoor play

Charlotte and I have also started to attend training relating to providing high quality outdoor play experiences for children, through attending the training we will receive resources for the children to use outdoors.

Please see attached parents guide for more details.



Clothing

Please can I ask that all parents / carers provide spare clothing for their children to have with them at nursery? Your child has a peg where a bag containing spare clothing can be left for them.

It is vital that all clothing is labelled a name wrote in biro in your child's clothing is sufficient this way we will be able to identify who's clothing belongs to who.

Please do not put your child in any of their best clothing for nursery as children are able to freely explore all resources and we cannot guarantee that they will stay pristine.

If you have accidentally picked up clothing that is not your child's please can you ensure that it is returned to nursery?

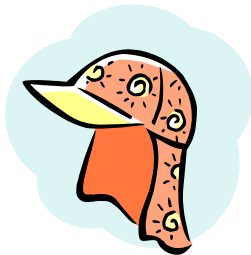


Prams

The nursery now has an allocated pram shed to store your child's pram whilst they are at nursery. It is to the side of the building and is enclosed behind a gate that will be locked each evening when the nursery closes.

Please can you try as much as possible to fold your child's pram away into this shed to keep the entrance free from clutter and reduce the risks encase of a fire.

Please do not leave any valuables in your child's pram.



Summer weather

As we are set to have a "record braking" summer we need to ensure that the children are fully protected. If you have not already done so please could you provide a sun hat and sun cream for your child. Our policies state that during the hot weather children will stay in between the hours of 11am and 3pm. We regularly check the met office website for the UV rating to ensure maximum protection to your child.

If your child does not have any sun cream or a sun hat they will have to stay inside the nursery building.

Website

www.portico.biz

The nursery web site is updated regular with special events and pictures of your children's work. It also contains lots of other useful information and you can also read our past newsletters.

Information relating to staff training etc will also be updated on this site.

Direct Debits

As you are all aware nursery fees are payable in advance, why not make it easy and collect a direct debit application from the office so you can ensure that your account is up to date.

Illness

If your child is ill or will be absent from nursery we would be very grateful if you could give us a courtesy call to inform us.

We have recently had a few children with chicken pox and whilst this is a common childhood illness there are other illnesses that we have to report to the health protection agency.



Menu

The summer menu is now up and running, new meals have been added to this for the summer and there is a full copy displayed on the information board. If you require copies of any recipes please ask and I will get one to you as soon as possible.

Annual surveys

I would like to thank all parents who returned their annual surveys back to the nursery. It was lovely to read all the comments and devise an action plan focusing on area of concentration for the setting.

Your feedback is very important to us in order for us to deliver the best possible care to your child.

May I take this opportunity to remind you all that if you have a query that your first point of call is your child's key worker then the room senior, if at this stage the query cannot be resolved it will be passed over to Paula our myself.

Progress matters

Within the past few months we have had some changes as to how planning for your child's needs is completed, many parents are aware that the monthly reports sheet that is collected on your child has now changed. The change has been established for information to be allocated onto a data base that is used within the nursery to ensure that you child is progressing in all the six areas of learning.

The information on your child that is imputed will remain on the nursery premises and will be used at parent's evenings to show your child's progression.

Preschool and school leavers

The time for our "big Children" to leave for pastures new is fast approaching.

If your child will be leaving for school or an alternative preschool please could you complete the slip below so that I can amend all sessions in the system and ensure that your invoices are correct.



We will be holding a graduation ceremony at 2.30pm on Tuesday 20th July parents of the children will receive more details closer to the date.

Free Early Education Entitlement

Currently the government offer up to 12.5 hours free for children aged 3-4 years in September 2010 this will be rising to up to 15 hours free. This may mean that you could receive 3 half day sessions free of charge during the term time. Full fees will still be applicable during the non term time sessions. Application forms will be given out closer to the time.

Staff Changes

Lisa who was based in the toddler room has decided to have a change in carer and has left the nursery.

We now have a new trainee nursery nurse named Nicola working alongside Kerry and Kristina in the toddler room; she has come highly recommended by one of our close training providers her start date with the company is 07/06/2010.

Around the nursery we also have some trainees staff will introduce student who will be working in your child's room to you. Within the next couple of months we will also be expecting students from Edge Hill University.

Preschool / school leavers 2010

Child's Name _____

School / preschool your child will be attending

Leaving Date _____

(Please be as accurate as possible to ensure that your invoice will be correct)

Signed _____ Date _____